

1 NORTH ELEVATION
1/16" = 1'-0"

21'-4"

CRANBURY PUBLIC LIBRARY & COMMUNITY CENTER

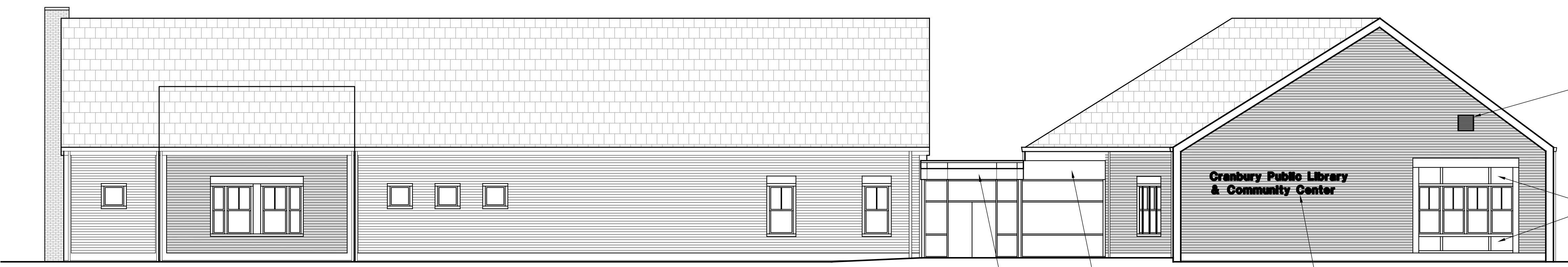
6'-3"

LIBRARY

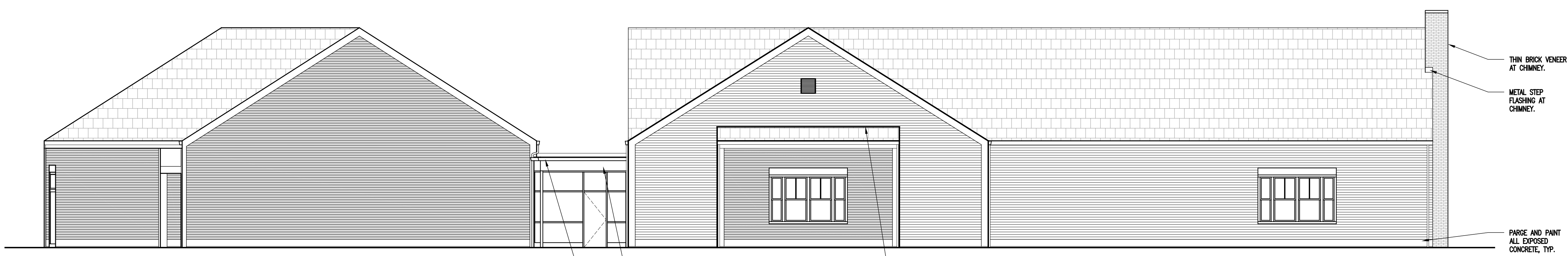
5 ALTERNATE #4 - SIGN ELEVATIONS
1" = 1'-0"



2 SOUTH ELEVATION
1/16" = 1'-0"



3 EAST ELEVATION
1/8" = 1'-0"



4 WEST ELEVATION
1/16" = 1'-0"

ALTERNATE #4 - BUILDING SIGNAGE:

Basis of Design: Architectural Signage Innovations 1" thick, LPS Series Cut Metal Dimensional Lettering or approved equal. Provide 12" lettering as shown on elevation, Helvetica font, anodized finish to be selected from full range. Each letter to be mounted on stand-offs with blind studs. Provide shop drawings with signage layout, and finishes for review and approval prior to fabrication.

THIN BRICK VENEER:

Basis of Design: GLEN-GERY Thin Tech Classic Series with Brandywine HMOS Thin brick or approved equal with a 25 year manufacturer warranty. Provide corner bricks, typical.

COMPOSITE METAL PANELS:

ALUCOBOND PE composite metal panels with contemporary color palette or approved equal. System to be attached with the raut and return wet seal method. Final details to be coordinated with the panel manufacturer to provide a weathertight installation.

CEMENT PARGING

Basis of Design: PARGE-ALL AF - Architectural Finishing Mortar or approved equal at all exposed concrete surface. Comply with Manufacturer instructions for storing, mixing, and application of materials.

FIBER CEMENT SIDING:

Basis of Design: James Hardie Building Products, Hardieplank Lap Siding, Smooth texture, with ColorPlus finish. Provide 30 year non-prorated warranty on siding and 15 year warranty on finish.
Provide 2 color pattern as indicated on drawings. Final colors to be selected from manufacturer's full range.
All fasteners to be concealed. Any fasteners required to be exposed to comply with manufacturer's installation instructions and must have factory finish color matched to the siding finish.

PVC TRIM:

Basis of Design: AZEK Traditional Trimboards, 4/4 with traditional corners. Provide 25 year non-prorated warranty on trim.
Size of trim to be 11.25", 5.5", and 3.5" in locations as indicated on drawings.
Trim to be painted with color selected from manufacturer's full range.
All exposed fasteners to be color matched to trim.
Use acrylic sealant at trim.

FIBER CEMENT PANELS:

Basis of Design: James Hardie Building Products, Hardiepanel Vertical Siding. Smooth texture with Hardie Trim Boards, Smooth Bottom Boards with Color Plus finish. Provide 30 yr non-prorated warranty on panels and 15 year warranty on finish.
Use 4'x10' panels as required for the indicated layout and provide shop drawing of layout with all panel sizes, board locations, fasteners, etc. for approval prior to start of installation.
Final colors to be selected from manufacturer's full range.
All fasteners are to be concealed behind trim boards. Any fasteners that are required to be exposed must have factory finish color matched to the panels.

NOTES AT FIBER CEMENT ITEMS

- 1) GC to install fiber cement products based on Manufacturer's current installation instructions and details. Provide and install required flashing, fasteners, sealant, etc. to comply with the installation instructions whether specifically shown on details or not. In the event that these items would cause a change to the aesthetic appearance of the design, notify the Architect prior to installation.
- 2) Use self tapping screws approved by fiber cement manufacturer at all panels. Fasteners to be placed at centerline of panels and concealed by batten boards at perimeter. Fasteners locations to align horizontally across building. Location and spacing of fasteners to be submitted in shop drawings for review and approval prior to start of installation.
- 3) All exposed fasteners and sealants are to be color matched to the finish of the fiber cement product. There are (2) colors that must be matched. Coordinate the locations and quantities required.
- 4) Install weather resistive barrier.
- 5) Provide flat tabs at all window trim, door trim, and band boards and provide corner tabs at all corner trim to reduce the amount of exposed fasteners. Coordinate the required number of tabs with manufacturer requirements for fastener spacing.
- 6) Install 6" wide stainless steel flashing that overlaps the course below by 1" behind all butt joints.
- 7) Install flashing and fiber cement trim at all wall penetrations (hose bibs, pipes, light fixtures, outlets, etc.). Coordinate exact locations in field.
- 8) Install blocking between studs as required at all trim boards.

WATER RESISTIVE BARRIER

Basis of Design: James Hardie Products HardieWrap Weather Barriers - Weather Barrier, HardieWrap Weather Barriers - Flex-Flashing, and HardieWrap Weather Barriers - Seam Tape or approved equals. GC to include all accessories and related products required for proper installation including, but not limited to, flexible flashing around openings and penetrations, sealant, and seam tape.

03.08.17 ISSUED FOR BID

CRANBURY PUBLIC LIBRARY
23 MAIN STREET CRANBURY, NJ

arcari iovino
+ ARCHITECTS PC

ONE KATHERINE STREET
LITTLE FERRY, NJ 07643
201 641 0600, FAX 201 641 0626
WWW.AIARCHS.COM

EDWARD ARCARI NJ#12306 ANTHONY IOVINO NJ#11720

EXTERIOR ELEVATIONS

SCALE: AS NOTED	A.201
DATE: 05.06.2015	
FILE: 1404\CURRENT\A.201	
©2015 arcari + iovino ARCHITECTS PC	